

# SemiFlex™ Distal Extremity Array



**Model 165**  
GE Signa® LX (4 CH)  
**Model 148**  
GE Excite® (8 CH)

## Description

This 4 to 11 element array (4 of them paired) is dedicated to imaging of the wrist as well as small extremities. This coil conveniently slips onto the wrist or extremity like a bracelet. This is a receive-only phased-array coil.

## Suggested Clinical Applications

- Wrist and distal extremity imaging as allowed by the MRI system.

## Product Specifications

- **Field Strengths:** 1.5T, 1.0T, 3.0T
- **Number of Elements:** 4 to 11
- **Weight:** 2 lbs (0.9 kg)
- **Ship Weight:** 5 lbs (2.3 kg)
- **Cable Length:** 65 in (165 cm)
- **Quality Factor (Q):**  
Unloaded: 600 @ 64 MHz  
Loaded: 44 @ 64 MHz
- **Physical Size:**

Size	Dia	Length
165	9 cm	18 cm
148	9 cm	18 cm

## Warranty/Repair Policy

Product is warranted to be free from defects in materials and workmanship for a period of two years from date of purchase. Typical turn-around time for repair/replacement of defective part(s) is 48 hours after receipt of defective product. Please see the published warranty for details.

## System Compatibility

GE Excite®, GE Excite® HD, GE Excite® HDx, GE Signa® LX (4CH), and others. Contact your ScanMed sales representative for details.

## Quality Assurance

All products are designed and manufactured under an ISO 13485/9001 registered quality system.



## Manufacturer

ScanMed of Resonance Innovations LLC  
10957 Lake Ridge Drive  
Omaha, NE 68136  
(402) 934-2650 (402) 778-9699 (FAX)

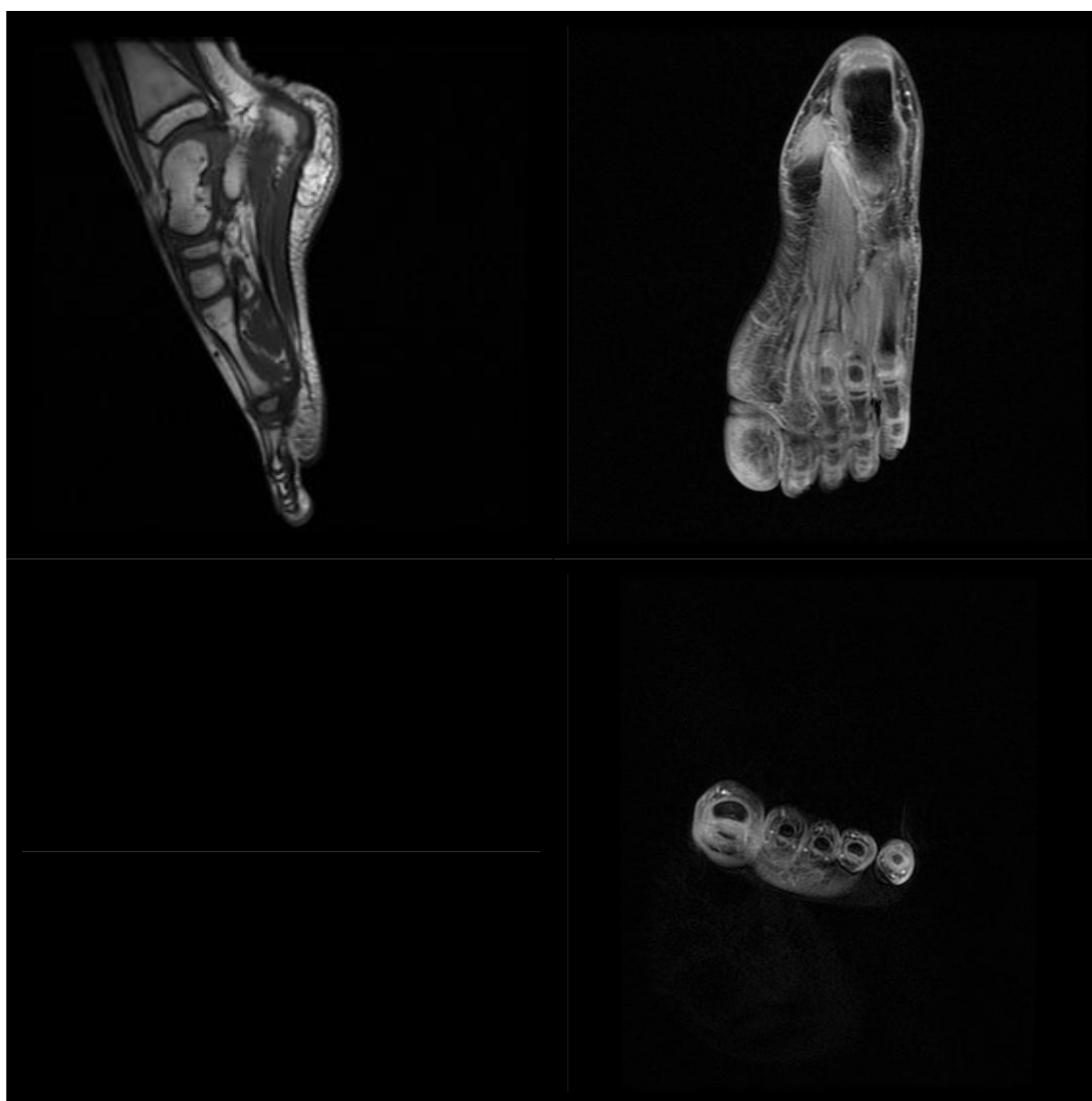
[www.scanmed.com](http://www.scanmed.com)

[info@scanmed.com](mailto:info@scanmed.com)

# SemiFlex™ Distal Extremity Array



**Model 165**  
GE Signa® LX (4 CH)  
**Model 148**  
GE Excite® (8 CH)



## Manufacturer

ScanMed of Resonance Innovations LLC  
10957 Lake Ridge Drive  
Omaha, NE 68136  
(402) 934-2650 (402) 778-9699 (FAX)

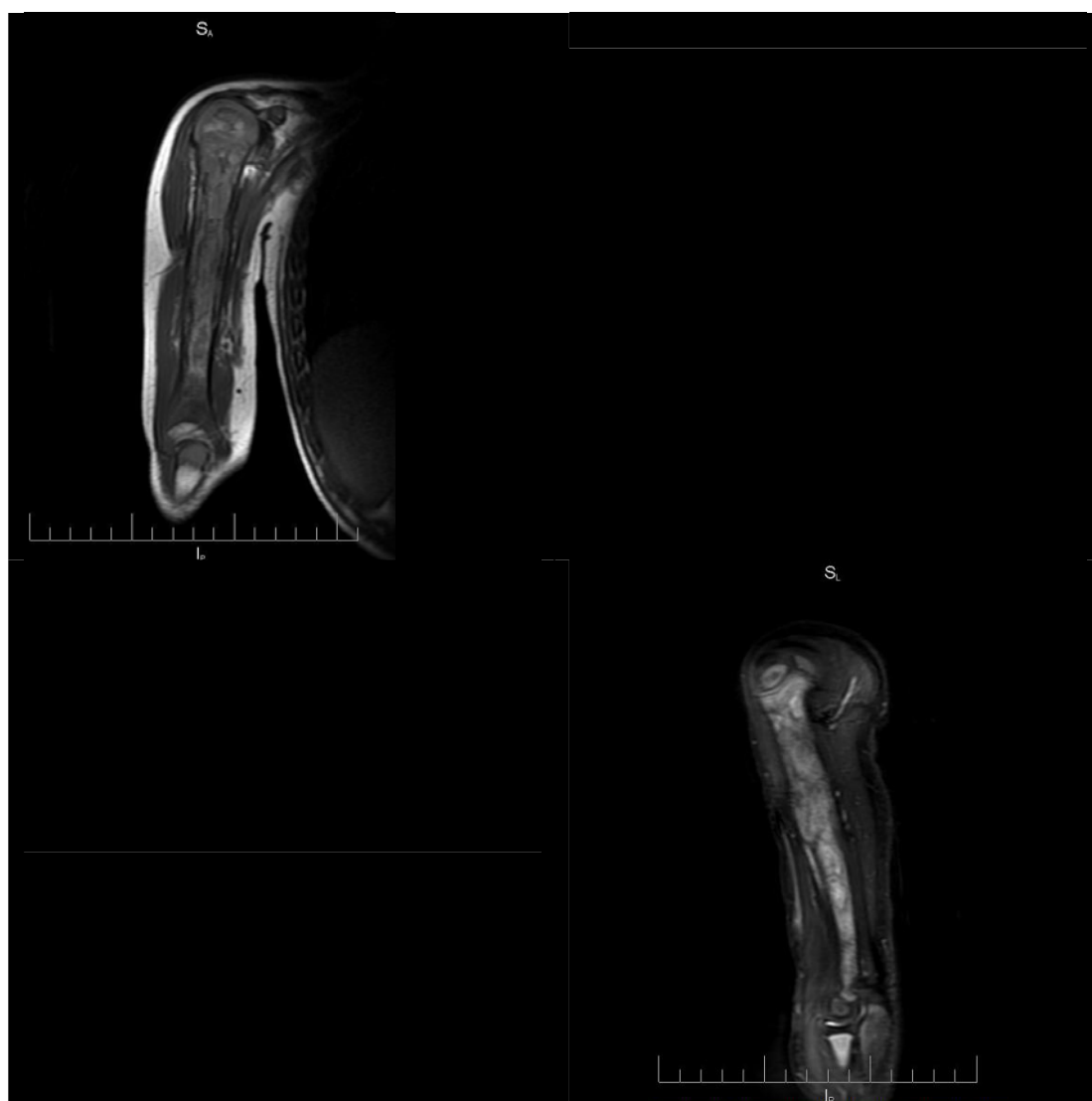
[www.scanmed.com](http://www.scanmed.com)

[info@scanmed.com](mailto:info@scanmed.com)

# SemiFlex™ Distal Extremity Array



**Model 165**  
GE Signa® LX (4 CH)  
**Model 148**  
GE Excite® (8 CH)



## Manufacturer

ScanMed of Resonance Innovations LLC  
10957 Lake Ridge Drive  
Omaha, NE 68136  
(402) 934-2650 (402) 778-9699 (FAX)

[www.scanmed.com](http://www.scanmed.com)

[info@scanmed.com](mailto:info@scanmed.com)

© 2008 Resonance Innovations LLC  
MB148GE01-RA (WIP) RJ