

# SemiFlex™ Long Bone Array



**Model 166**

Medium (4 CH)

**Model 167**

Large (4 CH)

**Model 168**

Medium (8 CH)

**Model 169**

Large (8 CH)

## Description

The Long Bone coil (Joint to Joint or J-J) is based on our patented bilateral lower array and conforms to the patient while positioning the elements as close possible to areas of interest. This semi-flexible array comfortably wraps around the patient's leg or arm. This coil design comes in two sizes – medium and large, as listed below. This is a receive-only phased array coil.

## Suggested Clinical Applications

- Soft tissue and bone imaging of one extremity, as allowed by the MRI system.
- Magnetic resonance peripheral angiography.
- Medium: Adult shoulder through wrist and knee to ankle.
- Large: Adult hip through knee.

## Product Specifications

- **Field Strengths:** 1.5T, 1.0T, 3.0T
- **Number of Elements:** 8-12
- **Weight:** 4 lbs (1.8 kg)
- **Ship Weight:** 10 lbs (4.5 kg)
- **Cable Length:** 72 in (183 cm)
- **Quality Factor (Q):**  
Unloaded: 460 @ 64 MHz  
Loaded: 40 @ 64 MHz
- **Physical Size:**

Size	Dia	Length
Medium	16 cm	62 cm
Large	21 cm	64 cm

## Warranty/Repair Policy

Product is warranted to be free from defects in materials and workmanship for a period of two years from date of purchase. Typical turn-around time for repair/replacement of defective part(s) is 48 hours after receipt of defective product. Please see the published warranty for details.

## System Compatibility

GE Excite®, GE Excite® HD, GE Excite® HDx, GE Signa® LX (4CH), and others. Contact your ScanMed sales representative for details.

## Quality Assurance

All products are designed and manufactured under an ISO 13485/9001 registered quality system.



## Manufacturer

ScanMed of Resonance Innovations LLC  
10957 Lake Ridge Drive  
Omaha, NE 68136  
(402) 934-2650 (402) 778-9699 (FAX)

[www.scanmed.com](http://www.scanmed.com)

[info@scanmed.com](mailto:info@scanmed.com)

# SemiFlex™ Long Bone Array



**Model 166**

Medium (4 CH)

**Model 167**

Large (4 CH)

**Model 168**

Medium (8 CH)

**Model 169**

Large (8 CH)



## Manufacturer

ScanMed of Resonance Innovations LLC  
10957 Lake Ridge Drive  
Omaha, NE 68136  
(402) 934-2650 (402) 778-9699 (FAX)

[www.scanmed.com](http://www.scanmed.com)

[info@scanmed.com](mailto:info@scanmed.com)

# SemiFlex™ Long Bone Array



**Model 166**

Medium (4 CH)

**Model 167**

Large (4 CH)

**Model 168**

Medium (8 CH)

**Model 169**

Large (8 CH)

Lossless JPEG compression, selection v...

Lossless JPEG compression, selection v...



## Manufacturer

ScanMed of Resonance Innovations LLC  
10957 Lake Ridge Drive  
Omaha, NE 68136  
(402) 934-2650 (402) 778-9699 (FAX)

[www.scanmed.com](http://www.scanmed.com)

[info@scanmed.com](mailto:info@scanmed.com)

# SemiFlex™ Long Bone Array



**Model 166**

Medium (4 CH)

**Model 167**

Large (4 CH)

**Model 168**

Medium (8 CH)

**Model 169**

Large (8 CH)



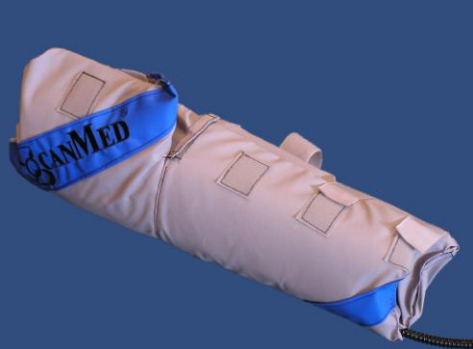
## Manufacturer

ScanMed of Resonance Innovations LLC  
10957 Lake Ridge Drive  
Omaha, NE 68136  
(402) 934-2650 (402) 778-9699 (FAX)

[www.scanmed.com](http://www.scanmed.com)

[info@scanmed.com](mailto:info@scanmed.com)

# SemiFlex™ Long Bone Array



**Model 166**

Medium (4 CH)

**Model 167**

Large (4 CH)

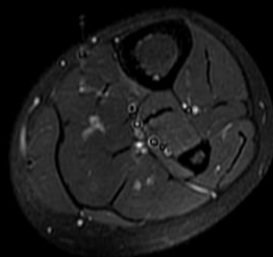
**Model 168**

Medium (8 CH)

**Model 169**

Large (8 CH)

Lossless JPEG compression, selection value 1, point transform 0, compression ratio ...



Lossless JPEG compression, selection value 1, point transform 0, compression ratio ...



## Manufacturer

ScanMed of Resonance Innovations LLC  
10957 Lake Ridge Drive  
Omaha, NE 68136  
(402) 934-2650 (402) 778-9699 (FAX)

[www.scanmed.com](http://www.scanmed.com)

[info@scanmed.com](mailto:info@scanmed.com)

© 2007 Resonance Innovations LLC  
MB16XGE01-R4.4 (8/19/09) RJ