

# Ankle Coil

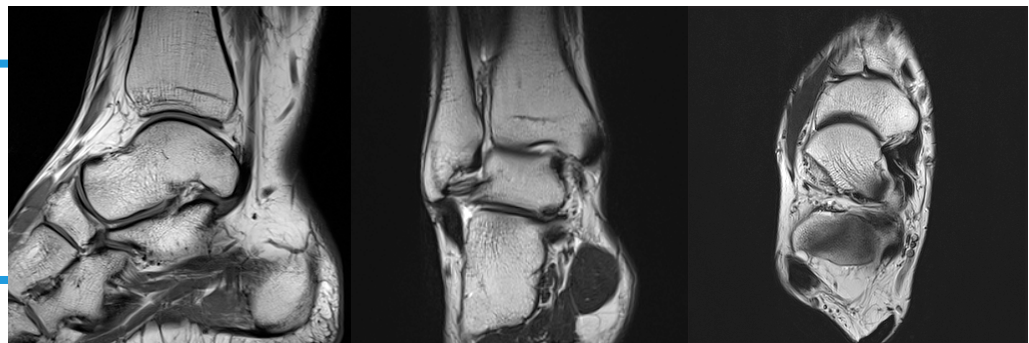
ScanMed's dedicated Ankle Coil offers an innovative new element layout for optimal ankle imaging. Unlike existing OEM coil designs, all 8 antennae are focused on this critical joint rather than spread across the foot and lower leg. The new design offers the highest possible resolution, penetration, and targeted imaging for the ankle bones, Achilles tendon, and surrounding soft tissues.

The dedicated ankle joint comes with two separable bases and a soft foam interior lining for comfortable patient positioning. The small FOV, high SNR, and impressive uniformity allow for faster imaging of the ankle allowing for less scan time and improved patient throughput.



## SPECIFICATIONS:

- Field Strength: 1.5T, 3T
- 8 elements for 8 or 16 channel systems
- Cable length: 120 cm (47 in)
- Weight: 2.7 kg (6 lb)



*Images of the ankle using our 8-Channel dedicated Ankle Coil*

Contact us for  
more information



✉ sales@scanmed.com

🌐 www.scanmed.com

☎ 402.934.2650

📄 402.778.9699