

Semi-Flex™ Shoulder/Knee Coil

ScanMed's Semi-Flex™ Shoulder/Knee Coil was developed for precise imaging of the soft tissue and bones of complex shoulder joint. The rigid spine holds the coil firmly in place on the patient, while the flexible foam housing brings the antenna elements closer to the target anatomies.

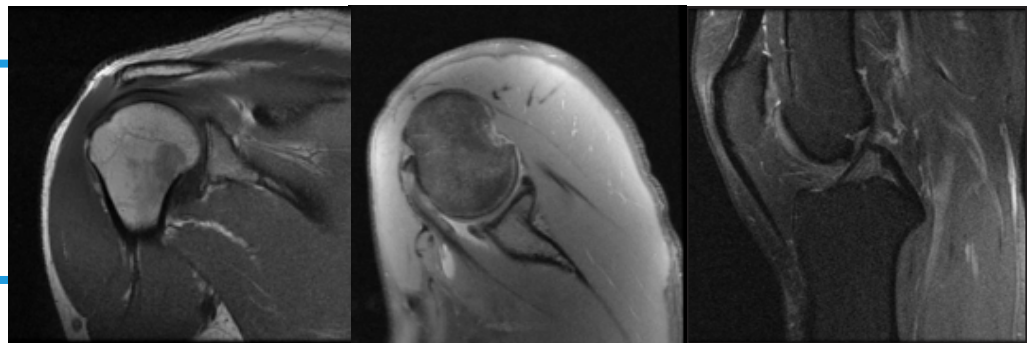
The unique design of the Semi-Flex™ Shoulder/Knee Coil offers optimal element density allowing for deeper penetration, high SNR, and uniformity to meet today's aggressive imaging protocols.

This versatile MRI coil also offers easy repositioning for imaging of the knees, ankles, and hips. The lightweight foam and extra long cable allows for both head and feet first imaging for greater comfort, patient compliance, and ease of imaging regardless of patient size.



SPECIFICATIONS:

- Field Strength: 1.5T, 3T
- 8 or 16 elements for 8 or 16 channel systems
- Cable length: 183 cm (72 in)
- Weight: 1.4 kg (3 lb)



Images of a shoulder and knee using our 8-Channel Semi-Flex™ Shoulder Coil

Contact us for
more information



✉ sales@scanmed.com

🌐 www.scanmed.com

☎ 402.934.2650

📄 402.778.9699